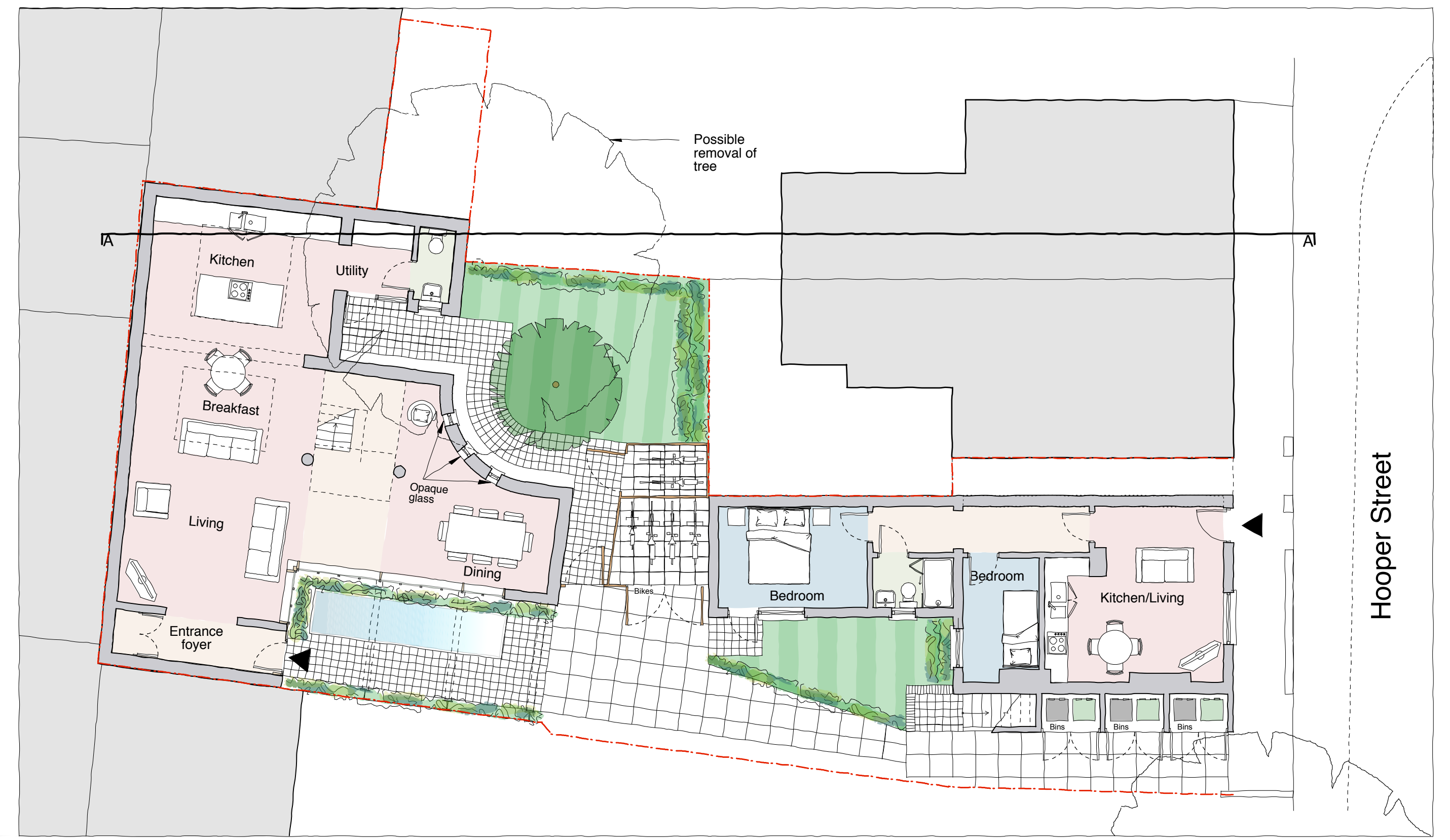


Ground floor plan - existing

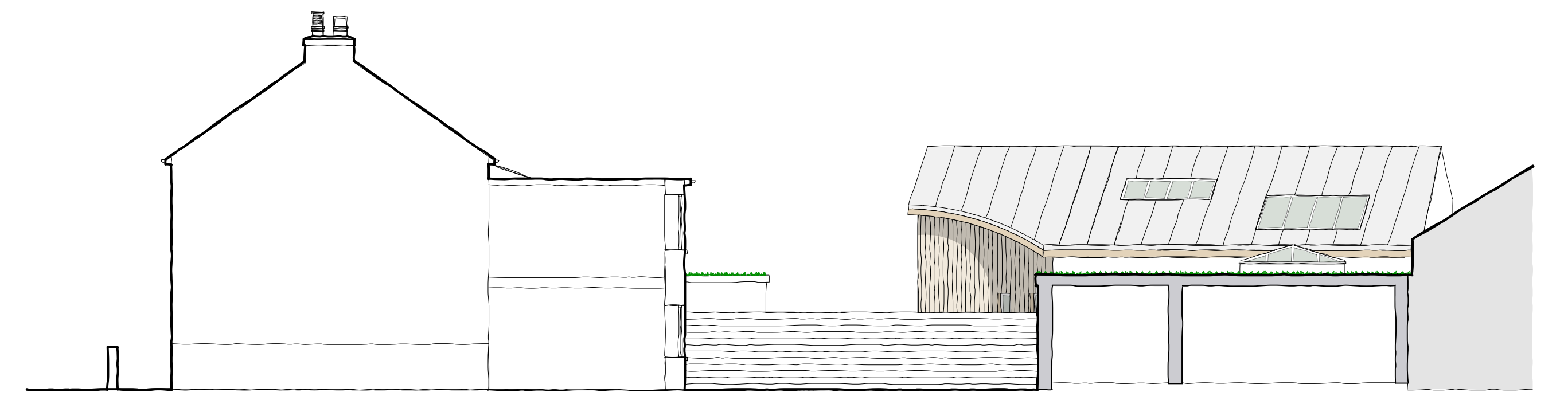


Ground floor plan - Proposed



Site section A - A / Existing

Workshop



Site section A - A / proposed

New dwelling (Previously workshop)

PRELIMINARY



Proposed refurbishment and new dwelling at 6 Hooper Street, Cambridge

Section through No. 8 Hooper St. and plans of adjacent development.

1:100 @ A1
January 2014
Drawing No. 06/552L/59
© Graham Handley Architects Ltd

